



**PLANT CARE**

THE MANUFACTURER & EXPORTER OF STAINLESS STEEL PLANTER POTS

ST. JUDE BUILDING, P.O. PERINCHERY, THRISSUR, KERALA, INDIA-680306

MOB: 9847146397 / 9847284467

Email: [ssplantcare@gmail.com](mailto:ssplantcare@gmail.com) Web: [www.ssplantcare.com](http://www.ssplantcare.com)

Maha\_Oct-2202011

Designer Manufacture & Exporter for Stainless Steel Planters



**PLANT CARE**

THE MANUFACTURER & EXPORTER OF STAINLESS STEEL PLANTER POTS

Designer Manufacture & Exporter for Stainless Steel Planters

**S**tainless Steel Planter is a container that is usually placed indoors for displaying live plants & flowers. They are light in weight, easy to maintain, stylish and brighter. It is rustfree, extremely durable and fire resistant. The planting and moving pots much more practical. High quality stainless steel materials are used to build up a planter. Protective coating (fibreglass lining) is provided to protect it from oxidation. It is water tight and 100% waterproof. Indoor plants are slow growing plants. It requires very little water and no need drainage to the planter



### Square & Square High

Dia (cm)	Height (cm)
30	30
40	40
30	60
40	80

(And your required size also possible)



### Square Slant

Bottom (cm)	Top (cm)	Height (cm)
30	40	60
30	40	80

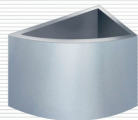
(And your required size also possible)



### Rectangular Slant

Top Length (cm)	Bottom Length (cm)	Width (cm)	Height (cm)
75	65	30	30
90	80	30	30
100	90	30	30

(And your required size also possible)



### Wall Corner

Front Curve (cm)	Length to Corner (cm)	Height (cm)
45	30	60
45	30	80

(And your required size also possible)



### Classic Cylinder

Dia (cm)	Height (cm)
18	18
30	30
35	35
40	40
45	45



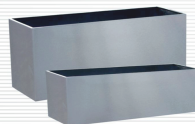
### Classic Paret

Dia (cm)	Height (cm)
18	60
30	60/90
35	60/90
40	60
45	60



### Conical

Bottom Dia (cm)	Top Dia (cm)	Height (cm)
30	40	60
30	40	80
30	40	100



### Rectangular

Length (cm)	Width (cm)	Height (cm)
75	30	30
90	30	30
100	30	30

(And your required size also possible)

